

Residential windows
and doors

ELITE LINE





ES Windows Advantages

- Ideal for single-family homes
- Meets the nation's toughest hurricane requirements for South Florida's High Velocity Hurricane Zone
- Large and small missile impact rated
- Glazing styles including colonial, brittany or full view
- Flat or OG options available
- Thick aluminum framing for superior thermal resistance and durability
- Framing features, high performing T5 and T6 aluminum alloys
- High-performance energy-efficient Low-E glass options by Tecnoglass
- Heat strengthened glass as a standard feature
- Corrosion-resistant hardware and fasteners as a standard
- Flush and flange frame for retrofit and concrete construction and fin frame for wood construction
- Anodized, kynar paints or wood grains available
- Screens feature aluminum frames and fiberglass mesh

ESW impact-rated windows will help:

- Protect the integrity of the home during a hurricane
- Improve the energy efficiency of your property
- Reduce exposure to harmful UV rays
- Improve the appearance of your home through architectural styles and finishes
- Improve the resale value of your property
- Meet the insurance eligibility requirements for your home
- Prevent forced entry 24/7
- Reduce external noise
- Reduce heat transmittance

TE

LINE

Elite Features

- Single source warranty: in-house aluminum and glass processing
- 5 to 10 year warranty on glass
- Coat Duranar paint finish as standard (AAMA 2605)
- Heat strengthened glass as standard
- Reduced sound transmission
- Superior energy performance and low U-values with insulating glass options
- Exclusive corrosion-resistant hardware for coastal areas

The E-Line from ES Windows is the ideal solution for any homeowner who wants to blend comfort with modern design. It features superior thermal performance and an impeccable clean design with no visible installation anchors. A wide variety of options, including fixed, single hung and sliding windows, as well as swing and sliding doors, are available to meet specific design intents and performance needs. The E-Line will satisfy the style needs of the most demanding homeowners.



The Elite quality standard





The Elite line of high-quality windows and doors was developed by our experienced team of engineers and designers to meet the needs of homeowners, contractors and homebuilders. We offer durable, efficient and affordable products that withstand the stringent Miami-Dade County protocols.

With more than 30 years of experience as a window and door manufacturer, ES Windows has earned a reputation for providing reliable products that meet today's modern aesthetics, with an environmentally friendly combination that helps homeowners reduce energy costs.

WINDOWS

ES-EL100

Single-Hung Window

ES-EL150

Fixed Window

ES-EL200

Horizontal Roller / Sliding Window

ES-5000

Casement Window

DOORS

ES-EL300

French Door / Swing Door

ES-EL400

Sliding Glass Door

WINDOW

ES-EL100

The ES-EL100 is a single-hung, impact-rated window that easily adapts to any design specification, satisfying the most demanding construction and architectural standards for security, strength and durability.

The ES-EL100 is designed for narrow openings to resist high pressures. Single-hung systems are known for its excellent water intrusion performance.

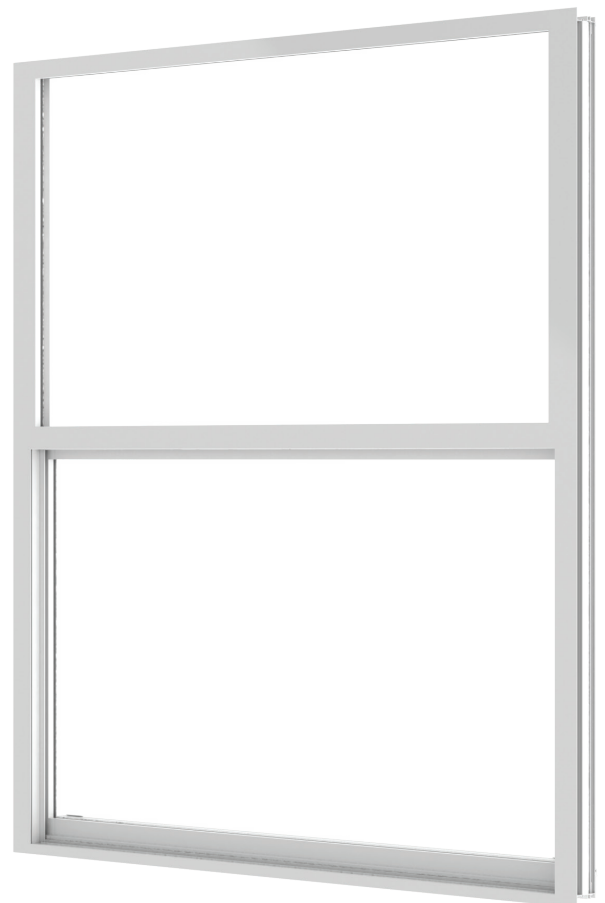


System Description

- Large missile impact rated
 - Frame depth: 2 15/16"
 - Configuration: O/X
 - Designed for laminated, insulating and insulating laminated glass
 - Tested water infiltration: 12 psf
 - Tested design load: +80/-80 psf LMI
 - Maximum size: 53 1/8" width x 76" height
 - U-value:
 - 0.64 - IGU (1/8" SB70 Clear + AS + 1/8" Clear + 0.090 PVB + 1/8" Clear)
 - 0.96 - LG (1/8" Clear + 0.090 PVB + 1/8" Clear)
 - Insulating laminated glass:
 - 1/8" + 3/8" AS + 1/8" + 0.090 Interlayer + 1/8"
 - 1/8" + 5/16" AS + 1/8" + 0.090 Interlayer + 1/4"
 - Laminated glass:
 - 1/8" + 0.090 Interlayer + 1/8"
 - 1/8" + 0.090 Interlayer + 1/4"
 - Standard egress size:
 - 39 3/4" x 64" for the minimum window height*
 - SHGC:
 - 0.23 on clear insulating laminated SB 70
- * Standard sill and 4" sash window stop

Features

- Block and tackle or ultra-lift balances
- Bottom spring latch or sweep lock
- Flange frame for masonry, fin frame for wood construction or flush frame for concrete opening



WMS

ES-EL150

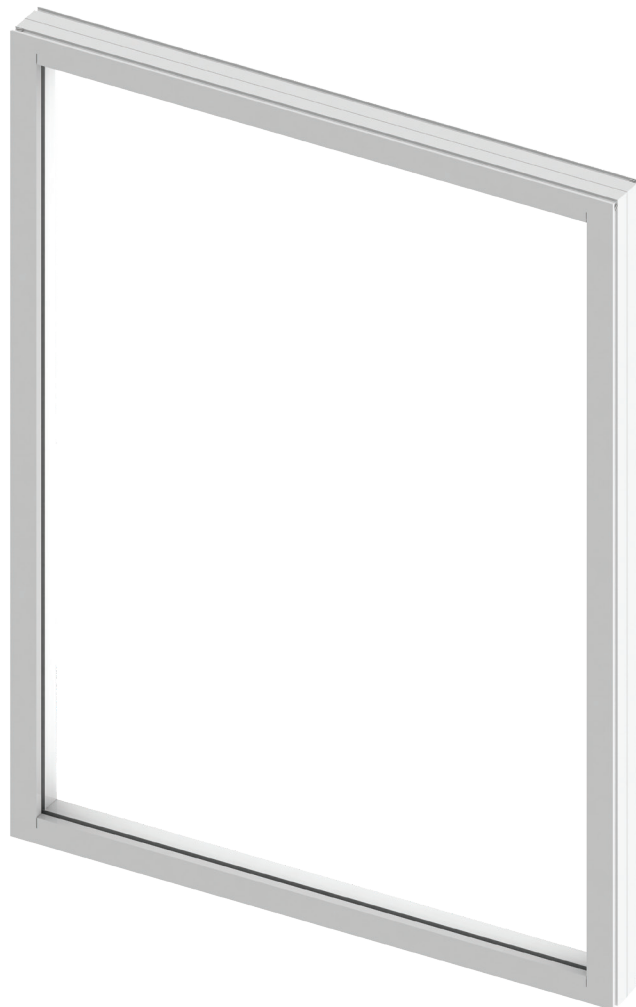
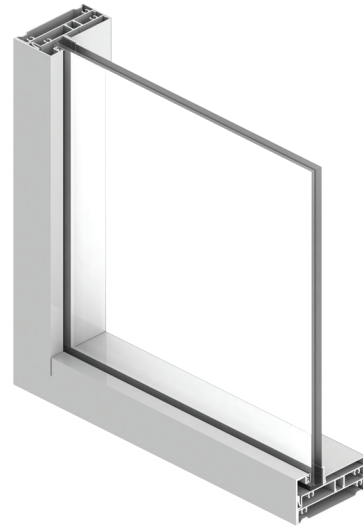
The ES-EL150 is a fixed window available in a variety of shapes, allowing a wide range of applications. This window is used to bring light to places with difficult accessibility.

System Description

- Large missile impact rated
- Frame depth: 2 5/16"
- Designed for laminated and insulating glass
- Tested water infiltration: 12 psf
- Tested design load: +80/-80 psf
- Maximum size: 54" width x 120" height
- U-value:
 - 0.51 - IGU (1/8" SB70 + AS + 1/8" Clear + 0.090 PVB + 1/4" Clear)
 - 1.01 - LG (3/16" Clear + 0.090 PVB + 3/16" Clear)
- Insulating laminated glass:
 - 1/8" + 5/16" AS + 1/8" + 0.090 Interlayer + 1/4"
 - 5/32" + 5/16" AS + 5/32" + 0.090 Interlayer + 5/32"
- Laminated glass:
 - 1/8" + 0.090 Interlayer + 1/4"
 - 3/16" + 0.090 Interlayer + 3/16"
- SHGC:
 - 0.26 on clear insulating laminated SB 70

Features

- Flange frame for masonry, fin frame for wood construction or flush frame for concrete openings
- Architectural shapes available
- Minimum radius: 14"
- Saflex PVB, Kuraray PVB, Vanceva Storm and SentryGlas Plus interlayer options



WINDOW

ES-EL200

The ES-EL200 is a horizontal roller sliding window. This product ensures an easy and smooth opening allowing maximum ventilation. ES-EL200 can be used on a wide variety of applications.

System Description

- Large missile impact rated
- Frame depth: 2 5/16"
- Configurations: XO, OX or XOX
- Designed for laminated, insulating and insulating laminated glass
- Tested water infiltration: 10 psf
- Tested design load: +80/-90 psf
- Maximum size:
 - 74" width x 63" height (2 panel)
 - 111" width x 63" height (3 panel)
- U-value:
 - 0.62 - IGU (1/8" SB70 + AS + 1/8" Clear + 0.090 PVB + 1/8" Clear)
 - 1.0 - LG (1/8" Clear + 0.090 PVB + 1/8" Clear)
- Insulating laminated glass:
 - 1/8" + 3/8" AS + 1/8" + 0.090 Interlayer + 1/8"
 - 1/8" + 5/16" AS + 1/8" + 0.090 Interlayer + 1/4"
- Laminated glass:
 - 1/8" + 0.090 Interlayer + 1/8"
 - 1/8" + 0.090 Interlayer + 1/4"
- Egress Size:
 - 72 3/8" x 30 1/8" and 52" x 42 1/8"
- SHGC:
 - 0.24 on clear insulating laminated SB 70

Features

- Polyamide rollers with needle bearings
- Spring latch at jamb or sweep lock options
- Flange or fin frame for masonry and wood construction, flush frame for concrete openings
- Saflex PVB, Kuraray PVB, Vanceva Storm and SentryGlas Plus interlayer options



ES-5000

The ES-5000 is a 2 1/8" impact-rated casement window featuring a rotating handle for an effortless operation. It is available in multiple glazing options providing flexibility in design.

System Description

- Large missile impact
- Frame depth: 2 1/8"
- Configurations: X, XX
- Designed for laminated and insulating glass
- Tested water infiltration: 13.5 psf
- Tested design load: +90/-90 psf
- Maximum size:
 - 37" width x 74 1/4" height X
 - 74" width x 74 1/4" height XX
- U-value:
 - 0.70 - IGU (5/32" SB70 Clear + AS + 1/8" Clear + 0.090 PVB + 5/32" Clear)
- Insulating laminated glass:
 - 5/32" + 1/4" AS + 1/8" + 0.090 Interlayer + 5/32"
- Laminated glass:
 - 1/8" + 0.090 Interlayer + 1/8"
 - 5/32" + 0.090 Interlayer + 1/8"
- SHGC:
 - 0.22 on clear insulating laminated SB 70

Features

- Single arm operator and multi-point lock
- Heavy duty stainless steel four-bar hinge
- Flange frame for masonry and wood construction or flush frame for concrete openings
- Screens available in aluminum frame and fiberglass mesh
- Surface applied OG or flat muntins
- Folding crank handle



DOORS

ES-EL300

The ES-EL300 is a 1 3/4" panel depth impact-rated french door available with integrated sidelites. This product is designed to meet the most stringent standards.

ES-EL300 is a secure and durable door that can be used on a variety of applications, most commonly on residential condos.

System Description

- Large missile impact rated
- Out-swing motion
- Frame depth: 4"
- Configurations: X, XX, O
- Designed for laminated, insulating and insulating laminated glass
- Tested water infiltration: 12 psf
- Tested design load: +80/-80 psf
- Maximum size:
 - X: 39 3/4" width x 108" height
 - XX: 76" width x 108" height
 - O/XX/O: 152 5/16" width x 108" height
- U-value:
 - 0.70 - IGU (3/16" SB70 Clear + AS + 3/16" Clear + 0.090 PVB + 3/16" Clear)
 - 1.03 - LG (3/16" Clear + 0.090 PVB + 3/16" Clear)
- Insulating laminated glass:
 - 3/16" + 3/8" AS + 3/16" + 0.090 Interlayer + 3/16"
 - 1/4" + 3/8" AS + 1/8" + 0.090 Interlayer + 3/16"
- Laminated glass:
 - 3/16" + 0.090 Interlayer + 3/16"
 - 1/4" + 0.090 Interlayer + 1/8"
- SHGC:
 - 0.20 on clear insulating laminated SB 70
- Minimum width for accessibility is 72 13/16" on a two panel door
- Door width: 38 3/16"
- Sill height: 1 1/2"
- ADA sizes: Conf. X 38 7/8"

Features

- Wide variety of hardware options including three-point lock, heavy-duty hinges, lever handles, deadbolts, among others
- High bottom rail and high sill optional
- Self-mating sidelites
- OG muntins
- Saflex PVB, Kuraray PVB, Vanceva Storm and SentryGlas Plus interlayer options



ES-EL400

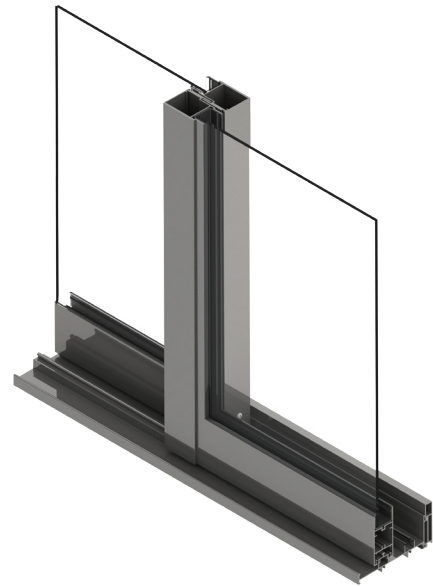
The ES-EL400 is a sliding glass door with a 4 13/16" frame profile. This product meets the most stringent specifications, and with its attractive design and one-to-four track frame, is ideal for a wide range of applications.

System Description

- Large missile impact rated
- Frame depth: 4 13/16"
- Configurations: XO, OX, XX, OXO, XXX, OXXO, OXXX, XXXX, XXXXOX
- Designed for laminated, insulating and insulating laminated glass
- Tested water infiltration: 12 psf
- Tested design load: +80/-80 psf
- Maximum panel size:
 - 48" width x 120" height
 - 60" width x 96" height
- U-value:
 - 0.57 - IGU (3/16" SB70 Clear + AS + 3/16" Clear + 0.090 PVB + 3/16" Clear)
 - 1.04 - LG (3/16" Clear + 0.090 PVB + 3/16" Clear)
- Insulating laminated glass:
 - 3/16" + 3/8" AS + 3/16" + 0.090 Interlayer + 3/16"
- Laminated glass:
 - 3/16" + 0.090 Interlayer + 3/16"
- SHGC:
 - 0.23 on clear insulating laminated SB 70
- Minimum width for accessibility is 75 5/8" on OX/XO configuration and 81 7/8" on XX configuration

Features

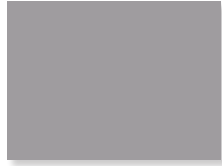
- Adjustable tandem polyamide needle bearing rollers
- Up to 4-track frame option
- Saflex PVB, Kuraray PVB, Vanceva Storm and SentryGlas Plus interlayer options
- Pocket configuration available



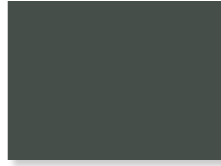
COLORS AND FINISHES

Color Options

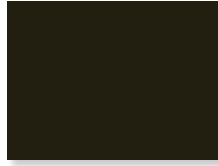
Duranar / Kynar



Sunstorm Arcadia Silver
UC70123F



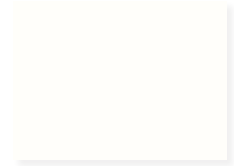
Sunstorm Silverstorm
UC106685F



Bermuda Bronze
UC105262



Black
UC40577



Bone White
UC43350

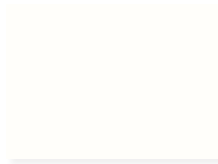
Hardware Finishes



Bronze



Silver



White



Black

Service

Our engineers and designers provide customers with ongoing assistance and technical support to ensure the best solution for every project. We offer professional guidance to help customers pinpoint and balance their priorities. With this expert assistance, customers can plan and complete projects to achieve maximum benefits.

Engineering and Design

We offer the right solutions for the most complex projects, and respond efficiently to the demands of architects and general contractors. We can deliver reliable, efficient and affordable products, due to a combination of advanced software technology and a leading team of expert engineers and designers, who specialize in aluminum, glass and window systems.

The Elite line provides customers the perfect combination of reliability, design and performance across a wide range of product types. Whether you are looking for noise reduction, temperature control, or protection from extreme weather, our line of products can provide the perfect performance solution, without sacrificing aesthetics.

ACCESSORIES

Design Elements

Every Elite window and door benefits from a combination of premium materials, cutting-edge production technology and the talent of an experienced team. All of these result in precise stylish designs that will endure over time.

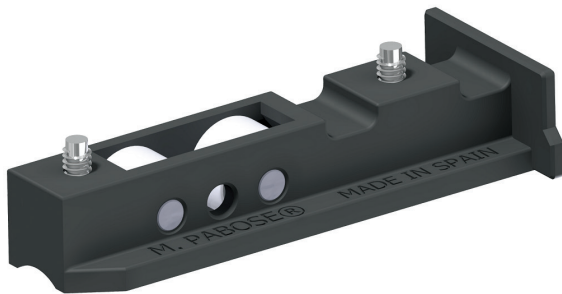
ES-EL100 & ES-EL200 Spring Latches



ES-EL100 & ES-EL200 Sweep Locks



ES-EL200 Horizontal Roller



ES-EL300 Hinge



ES-EL400 Roller



ES-EL400 Crest Slide





All content in this document is protected by copyright laws and is property of E.S. WINDOWS, LLC, its affiliates, or a licensed third party and may be modified without prior notice. Reproduction, modification, dissemination, distribution, sell or transfer, either in whole or part, without prior written permission is prohibited.
2021 © E.S. WINDOWS, LLC.

V - August, 2021

Designed for
quality and efficiency



ELITE
LINE



ESWINDOWS
The Power of Quality

ELITE
LINE